

# LYO SYMPHONY FLUTE SCALES

Scales should be performed as written and may or may not be performed connected. All scales are to be played at a minimum of  $\text{♩} = 120$ .  
Scales should be performed in order without delay between scales.

## 1. G Major Scale



## 2. C Major Scale



## 3. F Major Scale



## 4. B $\flat$ Major Scale



## 5. E $\flat$ Major Scale



## 6. A $\flat$ Major Scale



## 7. D $\flat$ Major Scale



## 8. Chromatic Scale



# LYO SYMPHONY OBOE SCALES

Scales should be performed as written and may or may not be performed connected. All scales are to be played at a minimum of  $\text{♩} = 120$ .  
Scales should be performed in order without delay between scales.

## 1. G Major Scale



## 2. C Major Scale



## 3. F Major Scale



## 4. B $\flat$ Major Scale



## 5. E $\flat$ Major Scale



## 6. A $\flat$ Major Scale



## 7. D $\flat$ Major Scale



## 8. Chromatic Scale



# LYO SYMPHONY B $\flat$ CLARINET SCALES

Scales should be performed as written and may or may not be performed connected. All scales are to be played at a minimum of  $\text{♩} = 120$ .  
Scales should be performed in order without delay between scales.

## 1. Concert G (written A) Major Scale



## 2. Concert C (written D) Major Scale



## 3. Concert F (written G) Major Scale



## 4. Concert B $\flat$ (written C) Major Scale



## 5. Concert E $\flat$ (written F) Major Scale



## 6. Concert A $\flat$ (written B $\flat$ ) Major Scale



## 7. Concert D $\flat$ (written E $\flat$ ) Major Scale



## 8. Chromatic Scale



# LYO SYMPHONY Eb ALTO/CONTRA CLARINET SCALES

Scales should be performed as written and may or may not be performed connected. All scales are to be played at a minimum of  $\text{♩} = 120$ .  
Scales should be performed in order without delay between scales.

## 1. Concert G (written E) Major Scale



## 2. Concert C (written A) Major Scale



## 3. Concert F (written D) Major Scale



## 4. Concert Bb (written G) Major Scale



## 5. Concert Eb (written C) Major Scale



## 6. Concert Ab (written F) Major Scale



## 7. Concert Db (written Bb) Major Scale



## 8. Chromatic Scale



# LYO SYMPHONY B $\flat$ BASS/ CONTRA CLARINET SCALES

Scales should be performed as written and may or may not be performed connected. All scales are to be played at a minimum of  $\text{♩} = 120$ .  
Scales should be performed in order without delay between scales.

## 1. Concert G (written A) Major Scale



## 2. Concert C (written D) Major Scale



## 3. Concert F (written G) Major Scale



## 4. Concert B $\flat$ (written C) Major Scale



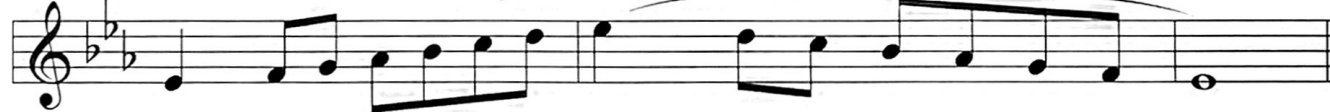
## 5. Concert E $\flat$ (written F) Major Scale



## 6. Concert A $\flat$ (written B $\flat$ ) Major Scale



## 7. Concert D $\flat$ (written E $\flat$ ) Major Scale



## 8. Chromatic Scale



# LYO SYMPHONY BASSOON SCALES

Scales should be performed as written and may or may not be performed connected. All scales are to be played at a minimum of  $\text{♩} = 120$ .  
Scales should be performed in order without delay between scales.

## 1. G Major Scale



## 2. C Major Scale



## 3. F Major Scale



## 4. Bf Major Scale



## 5. Ef Major Scale



## 6. Af Major Scale



## 7. Df Major Scale



## 8. Chromatic Scale



# LYO SYMPHONY Eb ALTO/BARITONE SAXOPHONE SCALES

Scales should be performed as written and may or may not be performed connected. All scales are to be played at a minimum of ♩ = 120.  
Scales should be performed in order without delay between scales.

## 1. Concert G (written E) Major Scale



## 2. Concert C (written A) Major Scale



## 3. Concert F (written D) Major Scale



## 4. Concert Bb (written G) Major Scale



## 5. Concert Eb (written C) Major Scale



## 6. Concert Ab (written F) Major Scale



## 7. Concert Db (written Bb) Major Scale



## 8. Chromatic Scale



# LYO SYMPHONY B $\flat$ SAXOPHONE SCALES

Scales should be performed as written and may or may not be performed connected. All scales are to be played at a minimum of  $\text{♩} = 120$ .  
Scales should be performed in order without delay between scales.

## 1. Concert G (written A) Major Scale



## 2. Concert C (written D) Major Scale



## 3. Concert F (written G) Major Scale



## 4. Concert B $\flat$ (written C) Major Scale



## 5. Concert E $\flat$ (written F) Major Scale



## 6. Concert A $\flat$ (written B $\flat$ ) Major Scale



## 7. Concert D $\flat$ (written E $\flat$ ) Major Scale



## 8. Chromatic Scale





# LYO SYMPHONY FRENCH HORN SCALES IN F

Scales should be performed as written and may or may not be performed connected. All scales are to be played at a minimum of  $\text{♩} = 120$ .  
Scales should be performed in order without delay between scales.

## 1. Concert G (written D) Major Scale

Musical notation for the first scale, Concert G (written D) Major Scale. It is written in treble clef with a key signature of two sharps (F# and C#) and a common time signature (C). The scale consists of two lines of music: the first line is an ascending scale from G4 to G5, and the second line is a descending scale from G5 to G4. The notes are: G4, A4, B4, C5, D5, E5, F#5, G5, G5, F#5, E5, D5, C5, B4, A4, G4.

## 2. Concert C (written G) Major Scale

Musical notation for the second scale, Concert C (written G) Major Scale. It is written in treble clef with a key signature of one sharp (F#) and a common time signature (C). The scale consists of two lines of music: the first line is an ascending scale from C4 to C5, and the second line is a descending scale from C5 to C4. The notes are: C4, D4, E4, F#4, G4, A4, B4, C5, C5, B4, A4, G4, F#4, E4, D4, C4.

## 3. Concert F (written C) Major Scale

Musical notation for the third scale, Concert F (written C) Major Scale. It is written in treble clef with a key signature of no sharps or flats and a common time signature (C). The scale consists of two lines of music: the first line is an ascending scale from C4 to C5, and the second line is a descending scale from C5 to C4. The notes are: C4, D4, E4, F4, G4, A4, B4, C5, C5, B4, A4, G4, F4, E4, D4, C4.

## 4. Concert B $\flat$ (written F) Major Scale

Musical notation for the fourth scale, Concert B $\flat$  (written F) Major Scale. It is written in treble clef with a key signature of one flat (B $\flat$ ) and a common time signature (C). The scale consists of two lines of music: the first line is an ascending scale from B $\flat$ 4 to B $\flat$ 5, and the second line is a descending scale from B $\flat$ 5 to B $\flat$ 4. The notes are: B $\flat$ 4, C4, D4, E4, F4, G4, A4, B $\flat$ 5, B $\flat$ 5, A4, G4, F4, E4, D4, C4, B $\flat$ 4.

## 5. Concert E $\flat$ (written B $\flat$ ) Major Scale

Musical notation for the fifth scale, Concert E $\flat$  (written B $\flat$ ) Major Scale. It is written in treble clef with a key signature of two flats (B $\flat$  and E $\flat$ ) and a common time signature (C). The scale consists of two lines of music: the first line is an ascending scale from E $\flat$ 4 to E $\flat$ 5, and the second line is a descending scale from E $\flat$ 5 to E $\flat$ 4. The notes are: E $\flat$ 4, F4, G4, A4, B $\flat$ 4, C4, D4, E $\flat$ 5, E $\flat$ 5, D4, C4, B $\flat$ 4, A4, G4, F4, E $\flat$ 4.

## 6. Concert A $\flat$ (written E $\flat$ ) Major Scale

Musical notation for the sixth scale, Concert A $\flat$  (written E $\flat$ ) Major Scale. It is written in treble clef with a key signature of three flats (B $\flat$ , E $\flat$ , and A $\flat$ ) and a common time signature (C). The scale consists of two lines of music: the first line is an ascending scale from A $\flat$ 4 to A $\flat$ 5, and the second line is a descending scale from A $\flat$ 5 to A $\flat$ 4. The notes are: A $\flat$ 4, B $\flat$ 4, C4, D4, E $\flat$ 4, F4, G4, A $\flat$ 5, A $\flat$ 5, G4, F4, E $\flat$ 4, D4, C4, B $\flat$ 4, A $\flat$ 4.

## 7. Concert D $\flat$ (written A $\flat$ ) Major Scale

Musical notation for the seventh scale, Concert D $\flat$  (written A $\flat$ ) Major Scale. It is written in treble clef with a key signature of three flats (B $\flat$ , E $\flat$ , and A $\flat$ ) and a common time signature (C). The scale consists of two lines of music: the first line is an ascending scale from D $\flat$ 4 to D $\flat$ 5, and the second line is a descending scale from D $\flat$ 5 to D $\flat$ 4. The notes are: D $\flat$ 4, E $\flat$ 4, F4, G4, A $\flat$ 4, B $\flat$ 4, C4, D $\flat$ 5, D $\flat$ 5, C4, B $\flat$ 4, A $\flat$ 4, G4, F4, E $\flat$ 4, D $\flat$ 4.

## 8. Chromatic Scale

Musical notation for the eighth scale, Chromatic Scale. It is written in treble clef with a common time signature (C). The scale consists of two lines of music: the first line is an ascending chromatic scale from C4 to C5, and the second line is a descending chromatic scale from C5 to C4. The notes are: C4, C#4, D4, D#4, E4, E#4, F4, F#4, G4, G#4, A4, A#4, B4, B#4, C5, C5, B4, B#4, A4, A#4, G4, G#4, F4, F#4, E4, E#4, D4, D#4, C4.

# LYO SYMPHONY TRUMPET SCALES

Scales should be performed as written and may or may not be performed connected. All scales are to be played at a minimum of ♩ = 120.  
Scales should be performed in order without delay between scales.

## 1. Concert G (written A) Major Scale



## 2. Concert C (written D) Major Scale



## 3. Concert F (written G) Major Scale



## 4. Concert B♭ (written C) Major Scale



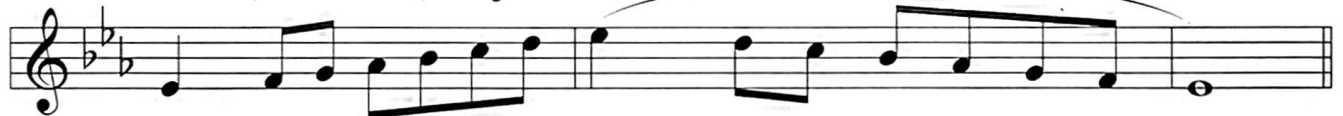
## 5. Concert E♭ (written F) Major Scale



## 6. Concert A♭ (written B♭) Major Scale



## 7. Concert D♭ (written E♭) Major Scale



## 8. Chromatic Scale



# LYO SYMPHONY TROMBONE SCALES

Scales should be performed as written and may or may not be performed connected. All scales are to be played at a minimum of ♩ = 120.  
Scales should be performed in order without delay between scales.

## 1. G Major Scale



## 2. C Major Scale



## 3. F Major Scale



## 4. B♭ Major Scale



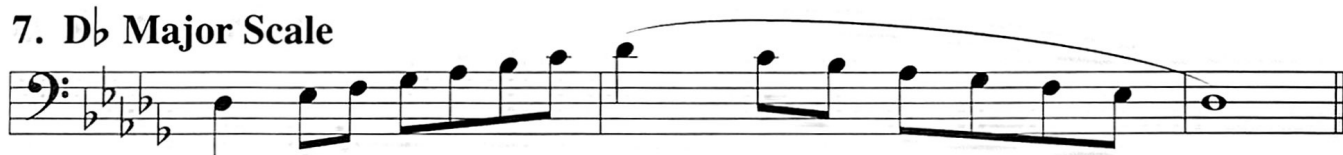
## 5. E♭ Major Scale



## 6. A♭ Major Scale



## 7. D♭ Major Scale



## 8. Chromatic Scale



# LYO SYMPHONY TROMBONE SCALES

Scales should be performed as written and may or may not be performed connected. All scales are to be played at a minimum of  $\text{♩} = 120$ .  
Scales should be performed in order without delay between scales.

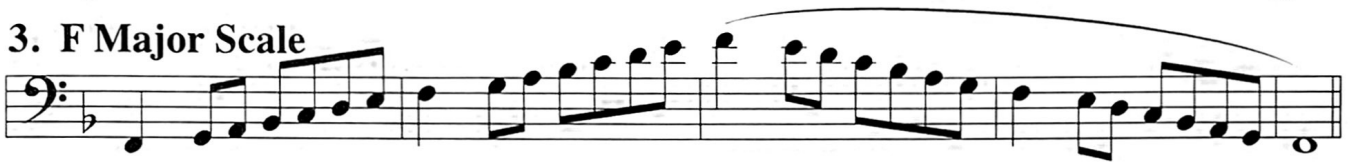
## 1. G Major Scale



## 2. C Major Scale



## 3. F Major Scale



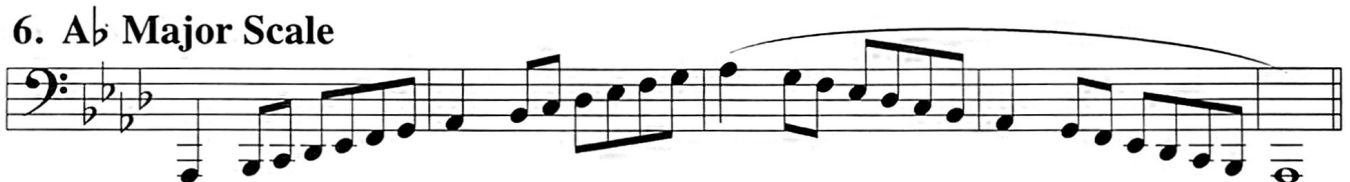
## 4. Bb Major Scale



## 5. Eb Major Scale



## 6. Ab Major Scale



## 7. Db Major Scale



## 8. Chromatic Scale



# LYO SYMPHONY TUBA SCALES

Scales should be performed as written and may or may not be performed connected. All scales are to be played at a minimum of  $\text{♩} = 120$ .  
Scales should be performed in order without delay between scales.

## 1. G Major Scale



## 2. C Major Scale



## 3. F Major Scale



## 4. B $\flat$ Major Scale



## 5. E $\flat$ Major Scale



## 6. A $\flat$ Major Scale



## 7. D $\flat$ Major Scale



## 8. Chromatic Scale

